



Greenbank
Primary School

Welcome to



Our School

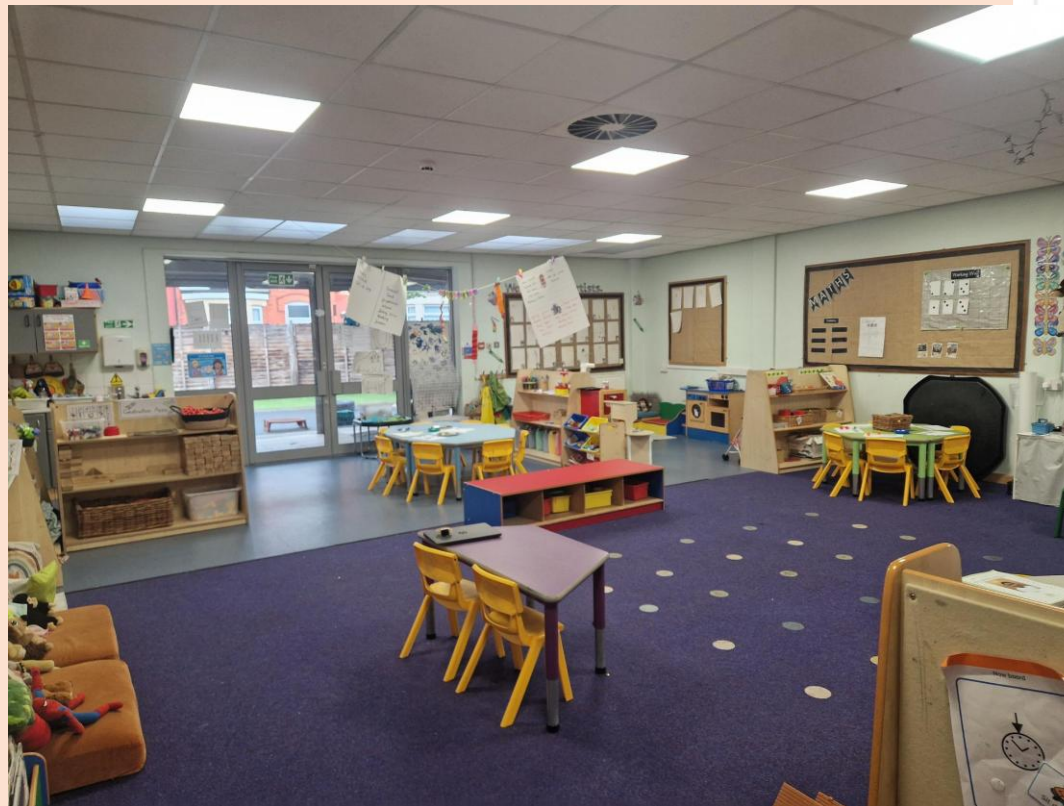


Mrs Wrigley,
Headteacher

- 2 form entry
- Last Ofsted July 2024, rated 'Good'

If you believe it, you
can achieve it.

Our Learning Environments



Our Learning Environments



Our Curriculum

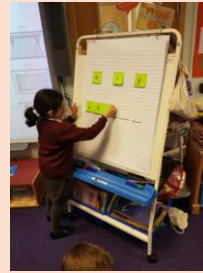
We follow the statutory EYFS curriculum, covering 7 areas of learning.



Personal, social,
emotional
development



Communication
and Language



Literacy



Mathematics



Physical Development



Understanding the
World

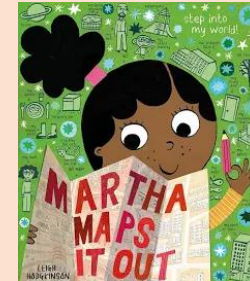
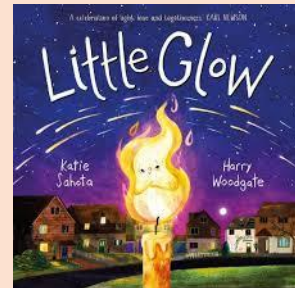
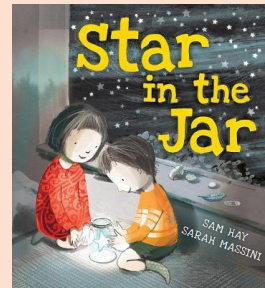
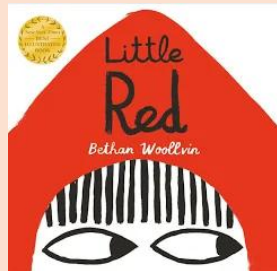


Expressive Arts and
Design

Our Curriculum

Children are taught in a mixture of whole class, small group and one to one activities. When not working with an adult, children are engaged in self initiated activities within continuous provision.

We have key texts, skills and knowledge sequenced across the year to ensure breadth of curriculum but also take children's interests into account.


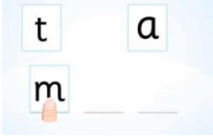




Communication and Language

Communication and language is at the heart of our curriculum. Children are exposed to rich vocabulary across all areas of learning. We use evidenced based programmes such as NELI and Wellcomm to support the development of children's speaking and listening skills.



A Typical Day in Reception

8:40-8:50 	Drop off and register Children are dropped off at the classroom door.
8:50-9:20	Phonics 
9:20-10:20	Guided reading and continuous provision
10:20-10:30 	Snack During snack time, children will sit together and be offered a piece of fresh fruit or vegetable. Children are encouraged to drink water and share a story.
10:30-11:40	Literacy and continuous provision 



A Typical Day in Reception





11:40-12:40 Lunch

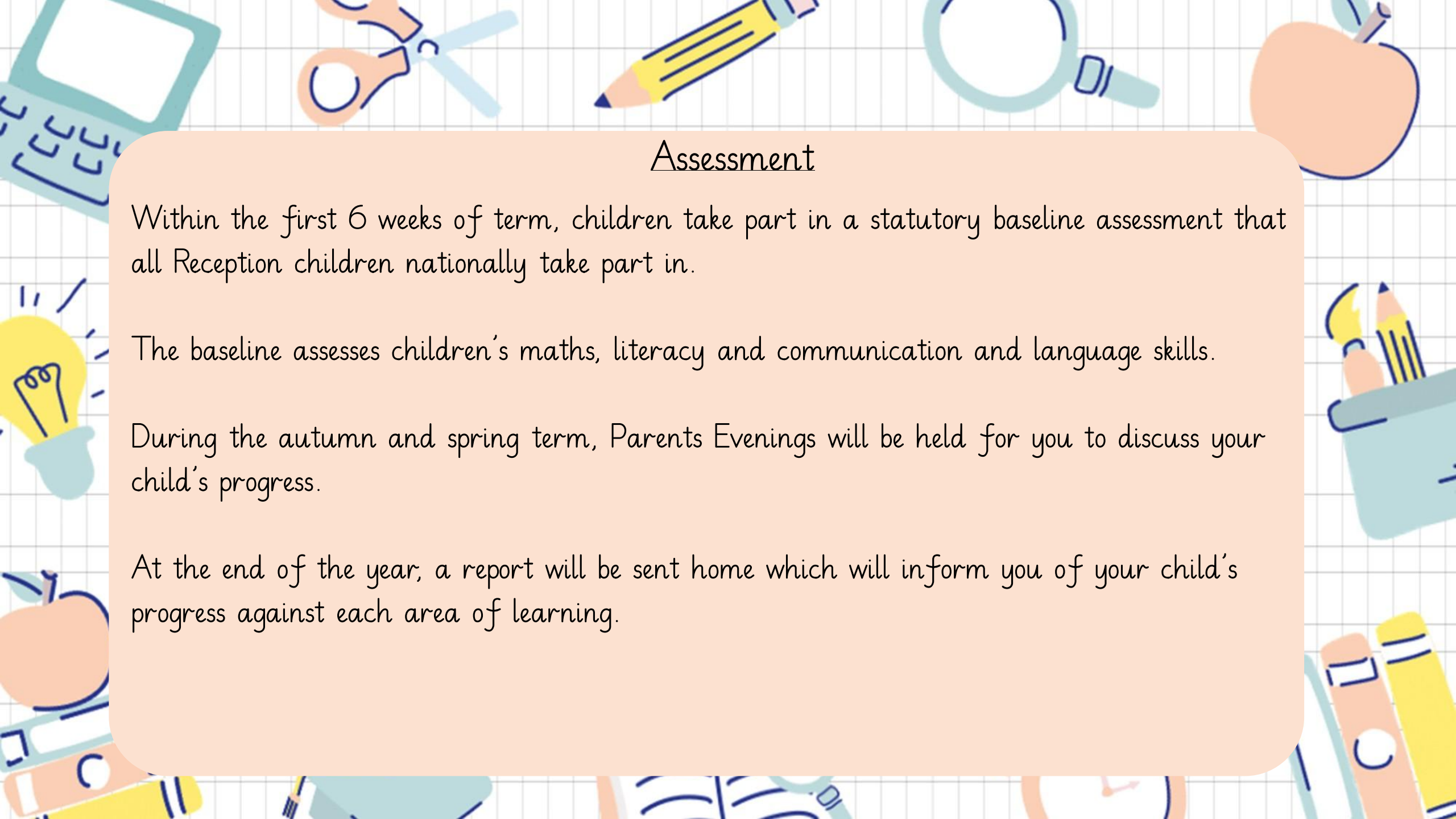
Children come to the school hall for lunch. Children in the EYFS and KSI get a free school meal.

There is a choice of vegetarian, meat dishes, jacket potato or pasta. Children are able to choose items from the salad bar to have alongside their lunch.

Children are able to bring their own packed lunches, containing healthy foods. We are a **nut free school**, no nuts can be brought in, including Nutella and peanut butter on sandwiches. Please inform us of any religious/cultural dietary needs.

A Typical Day in Reception

12:40-13:45	Maths and continuous provision	
13:45-15:00	Topic and continuous provision	
15:00-15:10	Story and songs	
15:10	Home time Children are collected from the classroom door.	



Assessment

Within the first 6 weeks of term, children take part in a statutory baseline assessment that all Reception children nationally take part in.

The baseline assesses children's maths, literacy and communication and language skills.

During the autumn and spring term, Parents Evenings will be held for you to discuss your child's progress.

At the end of the year, a report will be sent home which will inform you of your child's progress against each area of learning.

Safeguarding and Welfare Team



Miss Rowlands
Safeguarding Lead, Deputy Head
Teacher



Mrs Garnett
Welfare Officer



Miss Carson
Inclusion & Behaviour Manager, Deputy
Safeguarding Lead

Medical Needs

Learning support assistants are first aid trained. If a child hurts themselves, they will be seen by a first aider and a note will be sent home informing you of the incident.



If a child is feeling unwell, we may contact you and ask for your consent to give them paracetamol.



If your child has any medical needs (including asthma and allergies) you must inform school.



Attendance

Children should attend school everyday. If your child is going to be absent, please ring and let the school office know, including the reason.

Holidays should not be taken during term time and will be recorded as 'unauthorised absence'.

Appointments should be made in late as the day as possible to avoid disruption.

Getting to school on time is important for supporting a calm start to the school day. If you are late, you will need to enter through the school office, where you will be asked to sign your child in and give a reason for lateness.

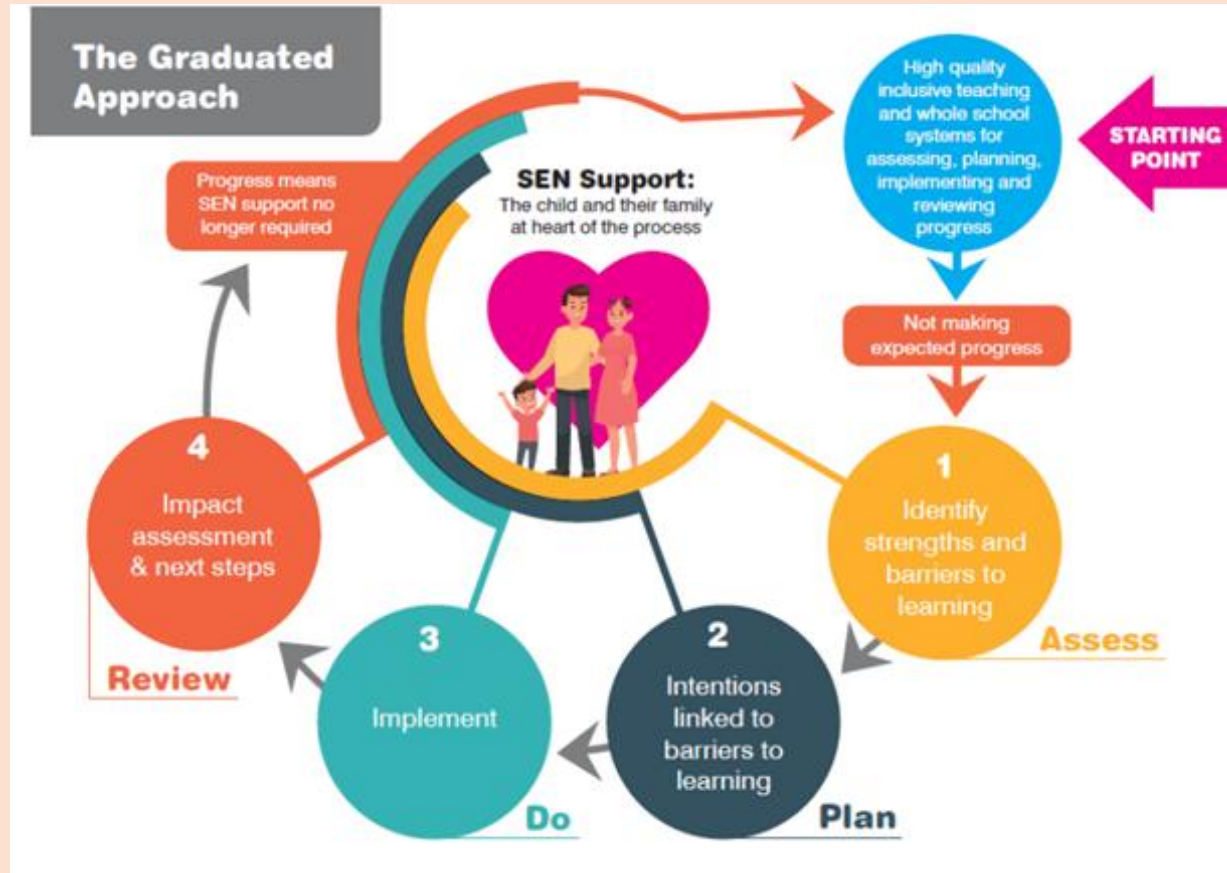


School SENDCo

School follows the 'Graduated Approach'.



Mrs Pawson
SENDCo



Uniform

White shirt, tie, grey trousers or skirt, maroon jumper or cardigan, grey socks and black plain school shoes.

School coats are available.

P.E. kit Maroon shorts/jogging bottoms, maroon t-shirt and black pumps.

School uniform can be purchased from Kitted Out, Bleasdale rd.



Before and After School Wrap Around Care

We have a breakfast and after school club ran by Community Family Services on the school grounds.

Breakfast Club: 7.45am – 8.45am £6.00 per session

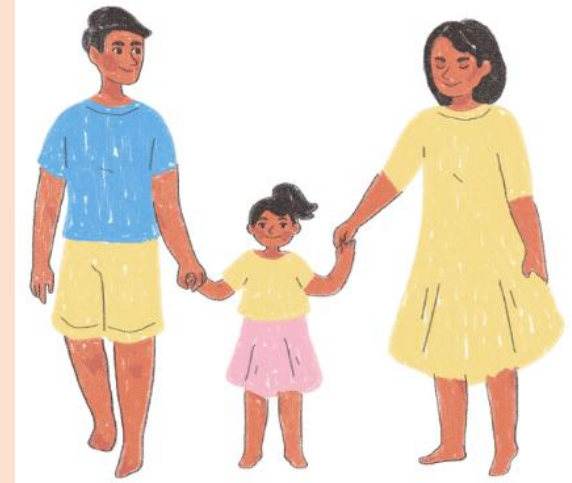
After School Club: 3.15pm – 6pm £10.00 per session

All sessions need to be booked through Community Family Services.



Parents as Partners

- Stay and Play sessions
- Family workshops
- Coffee mornings
- We have an active PTFA (Parents, Teachers and Friends Association) and warmly welcome new members.



Parents as Partners

- We encourage parents to share special moments with teachers, these are added to classroom displays.
- Information about what the children are learning is shared on the website and an app called Seesaw.
- Parents are expected to support children's learning through reading their reading book.



Extra-Curricular Events

- Throughout the year children will go on a range of trips and will have visitors to school.



- Whole school themed days/weeks/competitions take place to celebrate local and national events.

Being Ready for school

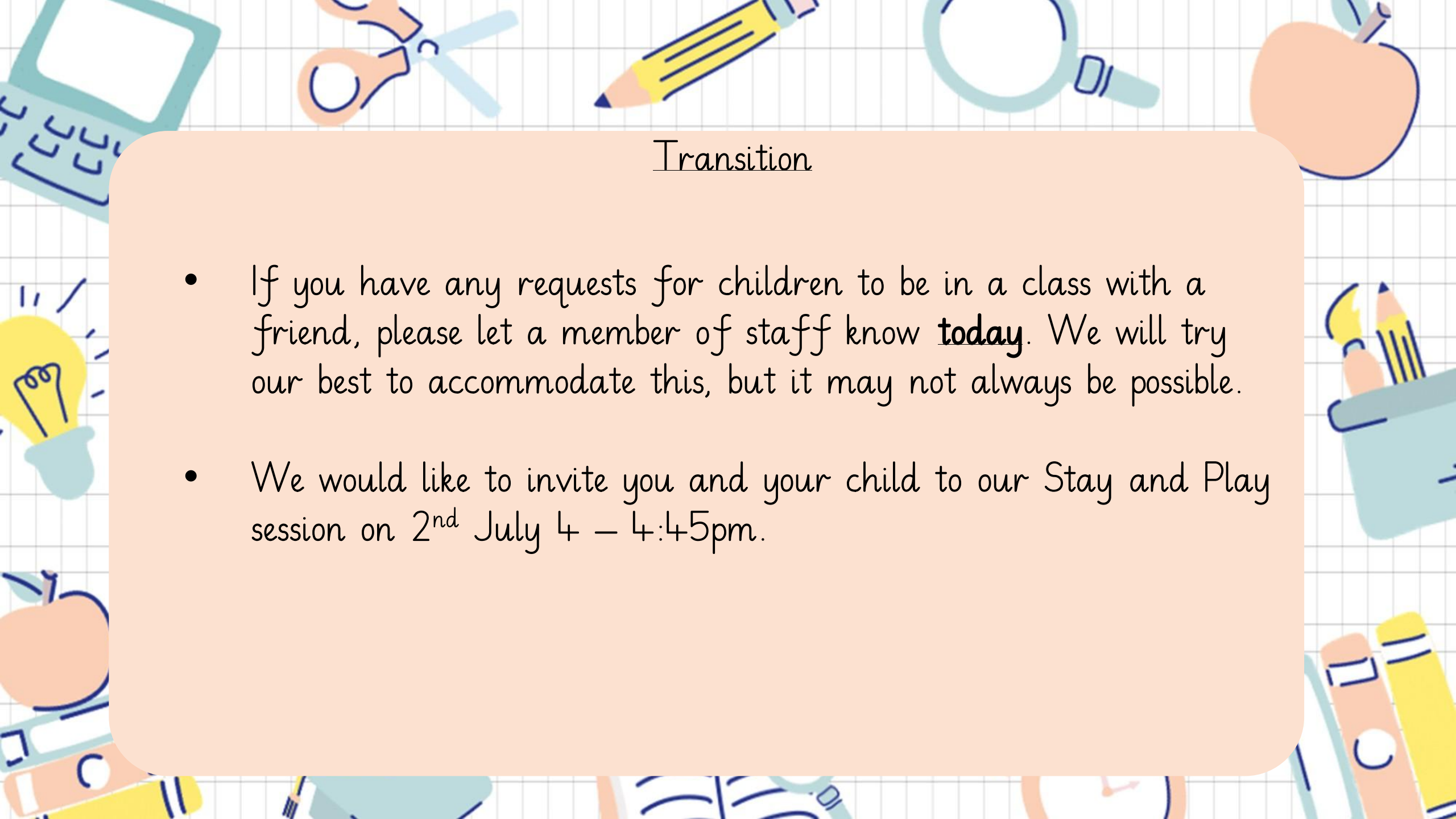
- Share stories and rhymes.
- Play turn taking games e.g. board games, snap.
- Encourage hand muscle development through threading, playing with playdough, using pegs.
- Encourage independence when eating, using the toilet and dressing.

Further support can be found: <https://startingreception.co.uk/>

Staying in Touch


- We have a school app that you can download from the app store.
- Our school office runs a cashless system. All payments are made through the Parent Pay App.





Transition

- If you have any requests for children to be in a class with a friend, please let a member of staff know **today**. We will try our best to accommodate this, but it may not always be possible.
- We would like to invite you and your child to our Stay and Play session on 2nd July 4 – 4:45pm.



First Week in Reception

- Reception children will start on **Wednesday 2nd September**, on reduced hours.
- From Monday 7th September, children will attend full time (8:40am – 3:10pm)



Thank you for your time and support this evening.

We are looking forward to getting to know you and your children.